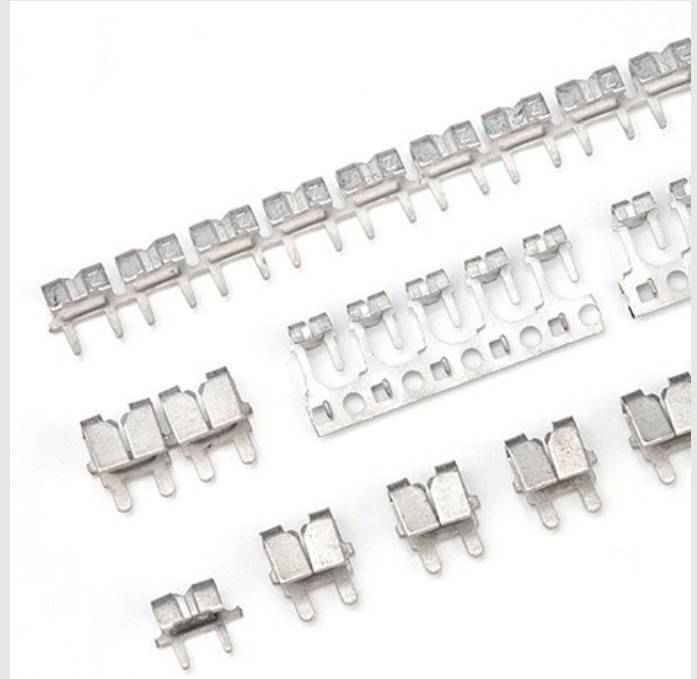


THR/THD Wire Connectors



Features and Benefits

- Zierick's Torsion-Lok™ IDC allows connection and insulation shear in one motion, eliminating pre-stripping.
- These IDC's provide superior performance compared to rigid contact beam IDC styles.
- They can be a cost-effective wire connection alternative.
- The high-deflection contact beam design withstands repeated mating cycles and harsh conditions such as extreme shock and vibration.
- The Torsion-Lok™ design provides a predictable, pre-loaded connection force.
- The torsion beams provide ample stored energy and are highly resistant to permanent deformation and stress relaxation.
- The gas-tight interconnection is maintained without wire creep and slip.



Produkt Discription

The Torsion-Lok™ IDC received the PMA-Higgins Design Award based on its ability to deliver exceptional performance while saving costs.

Designed for rigorous PCB and wire-end connection requirements, Torsion-Lok™ IDC's out-perform traditional rigid contact beam IDC styles.

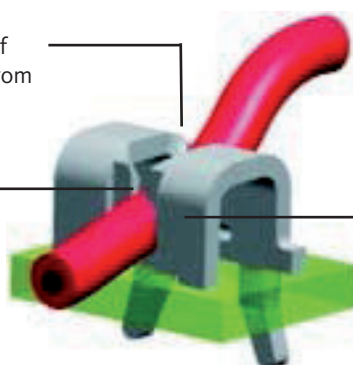
Unlike a rigid IDC, the Torsion-Lok™ permits a high degree of movement by the connection contacts. This greater movement allows a contact beam deflection range that is many times greater than traditional DC's.

Connection is achieved by simply pushing the wire into the high deflection, zero-clearance connection slot for a reliable, gas-tight connection. This IDC is a cost-effective method of wire connection, providing exceptional flexibility and superior performance compared to traditional rigid contact beam IDC styles.

Zierick's family of Torsion-Lok™ IDC's are available in loose and reeled formats for #30 through #14 AWG solid or stranded wire sizes. PCB and wire assembly can be done manually with Zierick hand tools and fixtures or automatically with Zierick semi- and fully-automated applicator systems.

Built-in wire strain relief prevents wire motion from transmitting to contact interface.

Insulation is cut with wire insertion, eliminating pre-stripping.



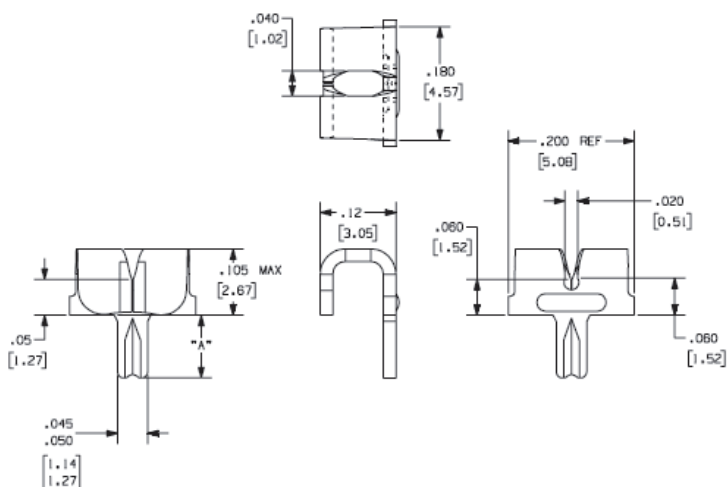
Unlike rigid contact beam styles providing only one-time use, Torsion-Lok™ beams allow ample movement for repeated mating.

Continuous clamping provides a gas-tight interconnection.

IDC (Insulation Displacement Connector) For #30-26 AWG Wire

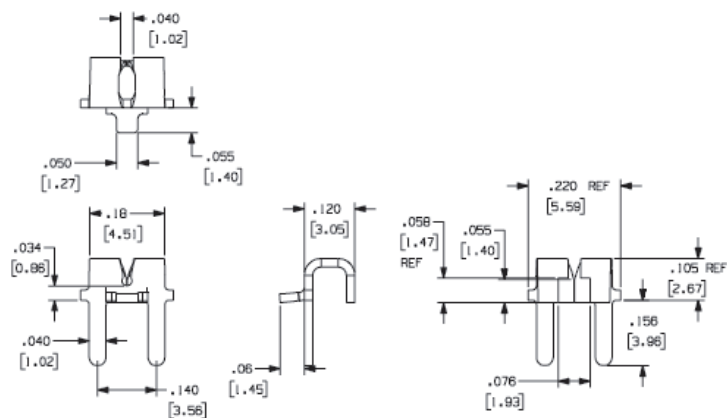
Part Numbers 1182, 1183, 6183

Loose Part No.	1182	1183
Reeled Part No.		6183
Mounting Type	Split Leg Splay for 0.031" (0.79mm) thick PCB	Split Leg Splay for 0.062" (1.57mm) thick PCB
Material Thickness / Type	0.020" (0.51mm) Brass	
Standard Finish	Loose: 100% Tin over Copper Reeled: 100% Tin over Copper	
Wire Gauge Range	#30-26 AWG	
Mounting Hole Diameter	Single Hole 0.055" \pm 0.003" (1.40mm \pm 0.076mm)	
Current Rating	10 Amperes	
"A" Dim	0.070" (1.78mm)	0.100" (2.54mm)
Applicator System	Loose: WTP-4ALL Reeled: Model 9700, 9700 XY Wire Termination: Consult factory.	



Part Number 6114

Loose Part No.	N/A
Reeled Part No.	6114
Mounting Type	Outward or Inward Splay Surface Mount Solder 0.062" (1.57mm) thick PCB
Material Thickness / Type	0.020" (0.51mm) Brass
Standard Finish	Loose: 100% Tin over Copper Reeled: 100% Tin over Copper
Wire Gauge Range	#30-26 AWG
Mounting Hole Diameter	2 holes 0.050" \pm 0.003" (1.27mm \pm 0.076mm) on 0.140" (3.56mm) centers
Current Rating	10 Amperes
Applicator System	Loose: ZPT-1114 Reeled: Model 9700, 9700 XY Wire Termination: Consult factory.



Werner Wirth GmbH

Hellgrundweg 111
22525 Hamburg
Germany

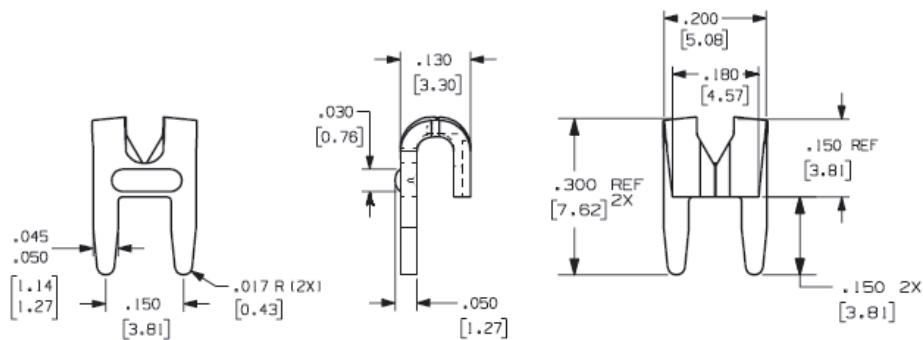
Tel +49 (0)40 752 491-0
Fax +49 (0)40 752 491-91

info@wernerwirth.de
www.wernerwirth.de

**WERNER
WIRTH**

PROJECT | CONNECT | PROTECT

IDC (Insulation Displacement Connector) For #24-18 AWG Wire

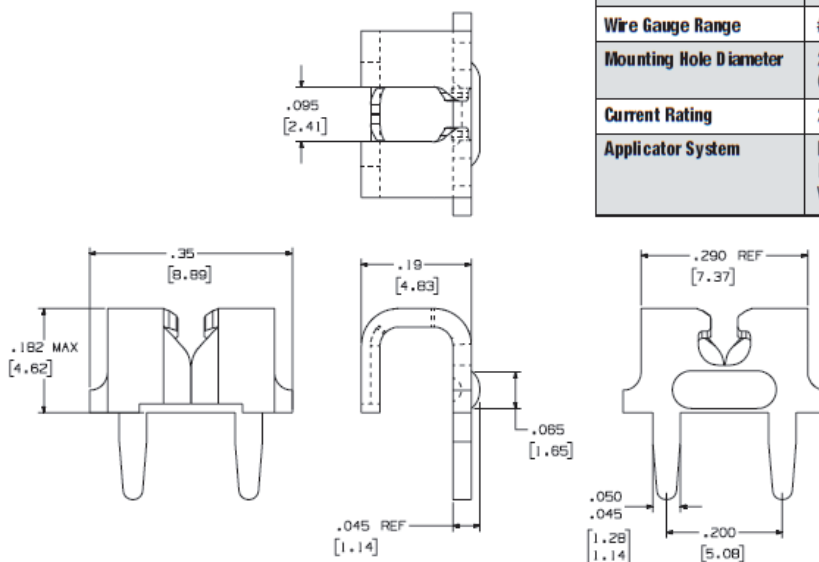


Part Numbers 1119, 6119

Loose Part No.	1119
Reeled Part No.	6119
Mounting Type	Outward or Inward Splay 0.062" (1.57mm) thick PCB
Material Thickness / Type	0.032" (0.81mm) Brass
Standard Finish	Loose: 100% Tin over Copper Reeled: 100% Tin over Copper
Wire Gauge Range	#24-18 AWG
Mounting Hole Diameter	2 holes 0.058" \pm 0.003" (1.47mm \pm 0.076) on 0.150" (3.81mm) centers
Current Rating	30 Amperes
Applicator System	Loose: WTP-4ALL Reeled: Model 9700, 9700 XY Wire Termination: Consult factory.

Part Number 1039

Loose Part No.	1039
Reeled Part No.	N/A
Mounting Type	Outward or Inward Splay 0.062" (1.57mm) thick PCB
Material Thickness / Type	0.032" (0.81mm) Brass
Standard Finish	Loose: 100% Tin over Copper Reeled: 100% Tin over Copper
Wire Gauge Range	#24-18 AWG
Mounting Hole Diameter	2 holes 0.058" \pm 0.003" (1.47mm \pm 0.076) on 0.200" (5.08mm) centers
Current Rating	20 Amperes
Applicator System	Loose: WTP-4ALL Reeled: Model 9700, 9700 XY Wire Termination: Consult factory.



Werner Wirth GmbH

Hellgrundweg 111
22525 Hamburg
Germany

Tel +49 (0)40 752 491-0
Fax +49 (0)40 752 491-91

info@wernerwirth.de
www.wernerwirth.de



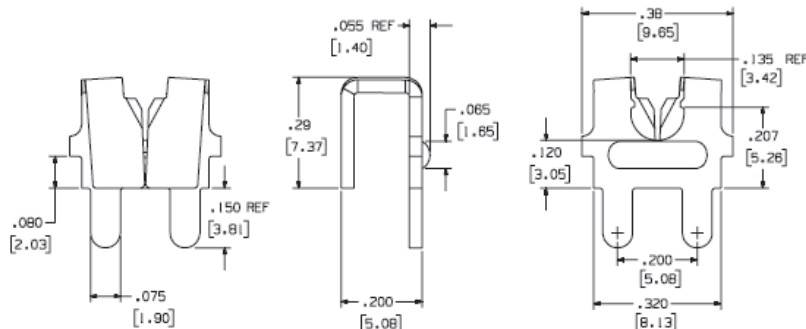
**WERNER
WIRTH**

PROJECT | CONNECT | PROTECT

IDC (Insulation Displacement Connector) For #16-14 AWG Wire

Part Numbers 1174, 6174

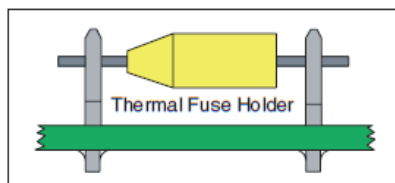
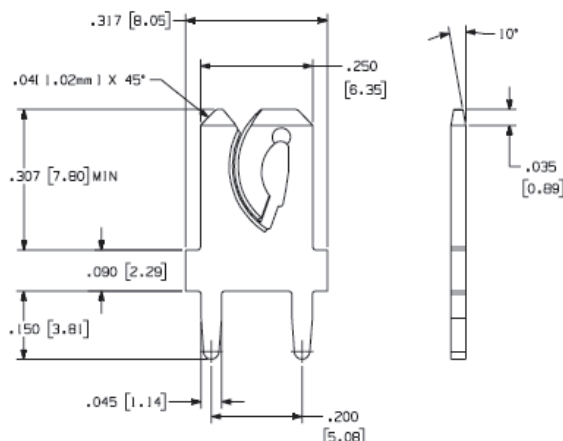
Loose Part No.	1174
Reeled Part No.	6174
Mounting Type	Outward or Inward Splay
Material Thickness / Type	0.032" (0.81mm) Brass
Standard Finish	Loose: 100% Tin over Copper Reeled: 100% Tin over Copper
Wire Gauge Range	#16-14 AWG
Mounting Hole Diameter	2 holes 0.080" ± 0.003 " (2.03mm ± 0.076 mm) on 0.200" (5.08mm) centers
Current Rating	20 Amperes
Applicator System	Loose: WTW-1174 Reeled: Model 9700, 9700 XY Wire Termination Tool: WTPPL-1174-1



IDC / Quick Disconnect Tab For #24-18 AWG Wire

Part Numbers 1185, 6185

Loose Part No.	1185
Reeled Part No.	6185
Mounting Type	Outward or Inward Splay
Material Thickness / Type	0.032" (0.81mm) Brass
Standard Finish	Loose: 100% Tin over Copper Reeled: 100% Tin over Copper
Wire Gauge Range	#24-18 AWG
Mounting Hole Diameter	2 x .058" ± 0.003 " (1.47mm ± 0.076 mm) holes on 0.20" (5.08mm) centers
Current Rating	20 Amperes
Applicator System	Loose: WTP-4ALL Reeled: Model 9700, 9700 XY Wire Termination: Consult factory.



Werner Wirth GmbH

Hellgrundweg 111
22525 Hamburg
Germany

Tel +49 (0)40 752 491-0
Fax +49 (0)40 752 491-91

info@wernerwirth.de
www.wernerwirth.de



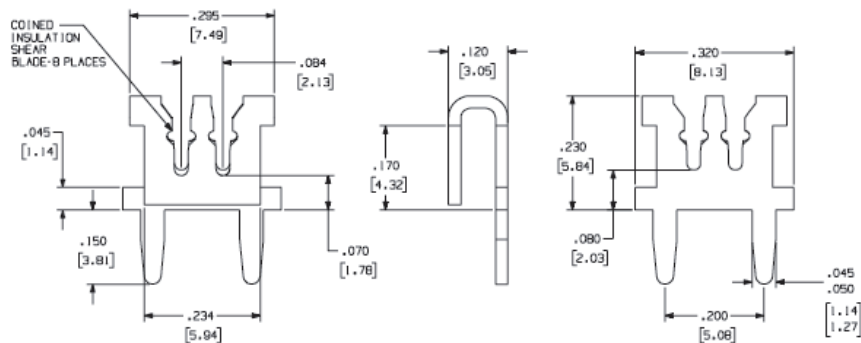
**WERNER
WIRTH**

PROJECT | CONNECT | PROTECT

IDC For #19-18 AWG Magnet Wire

Part Number 6072

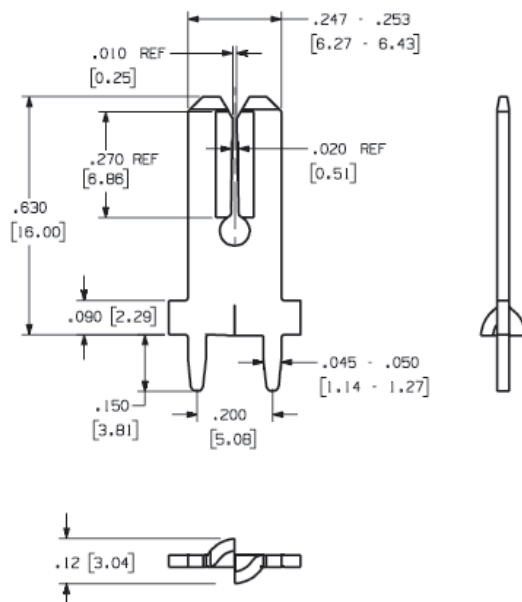
Loose Part No.	N/A
Reeled Part No.	6072
Mounting Type	Outward or Inward Splay
Material Thickness / Type	0.025" (0.64mm) Brass
Standard Finish	Loose: 100% Tin over Copper Reeled: 100% Tin over Copper
Wire Gauge Range	#19-18 AWG Magnet Wire
Mounting Hole Diameter	2 holes 0.058" ± 0.003 " (1.47mm ± 0.076 mm) on 0.200" (5.08mm) centers
Current Rating	15 Amperes
Applicator System	Reeled: Model 9700, 9700 XY Wire Termination: Consult factory.



0.025" (6.35mm) Tab / IDC

Part Number 6205

Loose Part No.	N/A
Reeled Part No.	6205
Mounting Type	Outward or Inward Splay
Material Thickness / Type	0.032" (0.81mm) Brass
Standard Finish	100% Tin over Copper
Wire Gauge Range	#19-18 AWG Magnet Wire
Mounting Hole Diameter	0.058" ± 0.003 " (1.47mm ± 0.076 mm)
Current Rating	20 Amperes
Applicator System	Model 9700, 9700 XY



Werner Wirth GmbH

Hellgrundweg 111
22525 Hamburg
Germany

Tel +49 (0)40 752 491-0
Fax +49 (0)40 752 491-91

info@wernerwirth.de
www.wernerwirth.de



**WERNER
WIRTH**

PROJECT | CONNECT | PROTECT