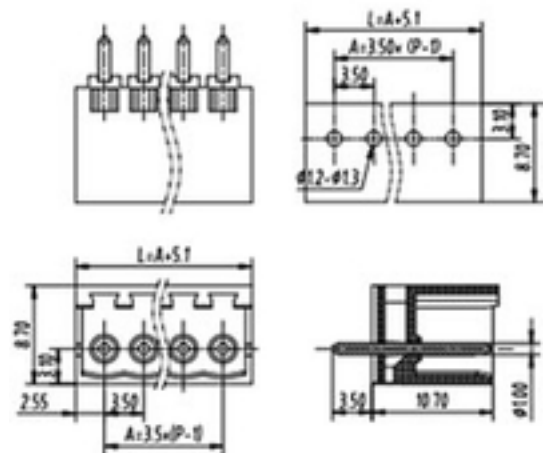
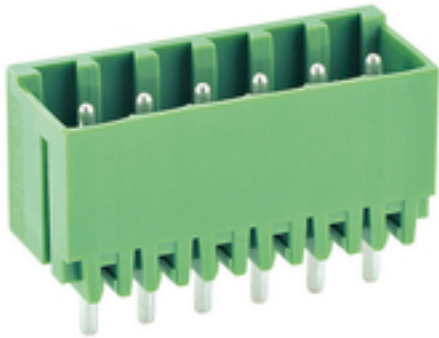


Screw and Spring Terminal Systems

Pin Strip / Pitch 3,5 / Solder / Wave Solder

Subject to technical changes



Technical Data

Connection Angle:	90° / Top Entry	Pitch:	3.5 mm
Poles:	2 - 24	AWG:	--
Counter Part 1:	SP35-xx-SE-SC-WP-SIT-GR	Diameter (solid):	--
Counter Part 2:	--	Diameter (flex):	--
Counter Part 3:	--	Screw:	--

Articlenumber

Designation WW :	PS35-xx-TC4SW-V-GR
------------------	--------------------

Registration

Current UL :	10 A	Current VDE:	--
Voltage UL:	300 V	Voltage VDE:	--



Screw and Spring Terminal Systems

Pin Strip / Pitch 3,5 / Solder / Wave Solder



To make it easier to understand our article codes, we have drawn up key overviews for all product groups under screw- and spring-type terminal systems. Each overview takes an exemplary article for the specific product group to show how the type, grid and colour etc. can be derived from the details in the article code.

Please do not hesitate to contact us if you have any further questions or if the products you want are not featured in the list.

Product base	Pitch	Number of contacts	Design	Position on PCB	Solder pin rows	Snap in	Solder version	Color	Specification
	2,50 mm		Side Connection OPen			Snap In	Through Hole	GR een	
	2,54 mm		Top Connection OPen	Vertical	Double Row	Flange	Reflow	BR own	Customer Specific
	3,50 mm		Side Connection 1 Side Wall	Rectangular	Triple Row	Flange Male	Surface Mounted Device	BL ack	
	3,81 mm		Side Connection 2 Side Walls			Flange Female		OR ange	
	5,00 mm		Side Connection 4 Side Walls					BI ue	
	5,08 mm		Side Connection 4 Side Walls with Chambers					DR Dark Grey	
	7,50 mm		Top Connection 1 Side Wall					LI ght Grey	
	7,62 mm		Top Connection 2 Side Walls					YE llow	
	10,00 mm		Top Connection 4 Side Walls					WH ite	
	10,16 mm		Top Connection 4 Side Walls with Chambers					NA ture	
								IV ory	
								MI lky White	

PS 254 - XX - TCOP - R - DR - SI - THR - BR - CS

