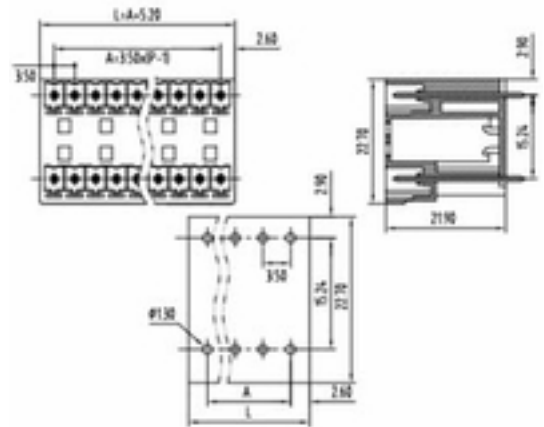
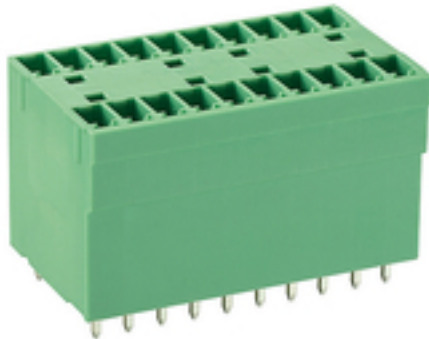


# Screw and Spring Terminal Systems

## Pin Strip / Pitch 3,5 / Solder / Wave Solder

Subject to technical changes



### Technical Data

Connection Angle:	90° / Top Entry	Pitch:	3.5 mm
Poles:	4 - 48	AWG:	--
Counter Part 1:	SP35-xx-SE-SC-WP-SI-GR-3	Diameter (solid):	--
Counter Part 2:	SP35-xx-SE-SC-WP-SI-GR-1	Diameter (flex):	--
Counter Part 3:	SP35-xx-SE-SCLP-V-GR	Screw:	--

### Articlenumber

Designation WW :	PS35-xx-TC4SWC-V-DR-DC-GR
------------------	---------------------------

### Registration

Current UL :	8 A	Current VDE:	--
Voltage UL:	300 V	Voltage VDE:	--



# Screw and Spring Terminal Systems

## Pin Strip / Pitch 3,5 / Solder / Wave Solder



To make it easier to understand our article codes, we have drawn up key overviews for all product groups under screw- and spring-type terminal systems. Each overview takes an exemplary article for the specific product group to show how the type, grid and colour etc. can be derived from the details in the article code.

Please do not hesitate to contact us if you have any further questions or if the products you want are not featured in the list.

Product base	Pitch	Number of contacts	Design	Position on PCB	Solder pin rows	Snap in	Solder version	Color	Specification
	2,50 mm		Side Connection <b>OPen</b>			Snap In	Through Hole	<b>GR</b> een	
	2,54 mm		Top Connection <b>OPen</b>	Vertical	Double Row	Flange	Reflow	<b>BR</b> own	Customer Specific
	3,50 mm		Side Connection <b>1</b> Side Wall	Rectangular	Triple Row	Flange Male	Surface Mounted Device	<b>BL</b> ack	
	3,81 mm		Side Connection <b>2</b> Side Walls			Flange Female		<b>OR</b> ange	
	5,00 mm		Side Connection <b>4</b> Side Walls					<b>BI</b> ue	
	5,08 mm		Side Connection <b>4</b> Side Walls with Chambers					<b>DR</b> Dark Grey	
	7,50 mm		Top Connection <b>1</b> Side Wall					<b>LI</b> ght Grey	
	7,62 mm		Top Connection <b>2</b> Side Walls					<b>YE</b> llow	
	10,00 mm		Top Connection <b>4</b> Side Walls					<b>WH</b> ite	
	10,16 mm		Top Connection <b>4</b> Side Walls with Chambers					<b>NT</b> ure	
								<b>IV</b> ory	
								<b>MI</b> lky White	

**PS 254 - XX - TCOP - R - DR - SI - THR - BR - CS**

